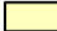






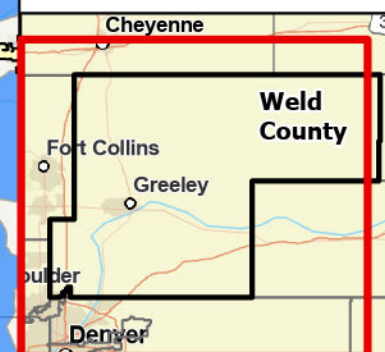
All Locations Impacted by Data Falsification

As of 07/23/2025

217 Closed sites
187 Active sites

-  Municipalities
-  Colorado County Boundaries
-  CPW All High Priority Habitat (2025)
-  Closed (black) = post-production locations* that have completed remediation phase
-  Active (green) = locations* currently under remediation

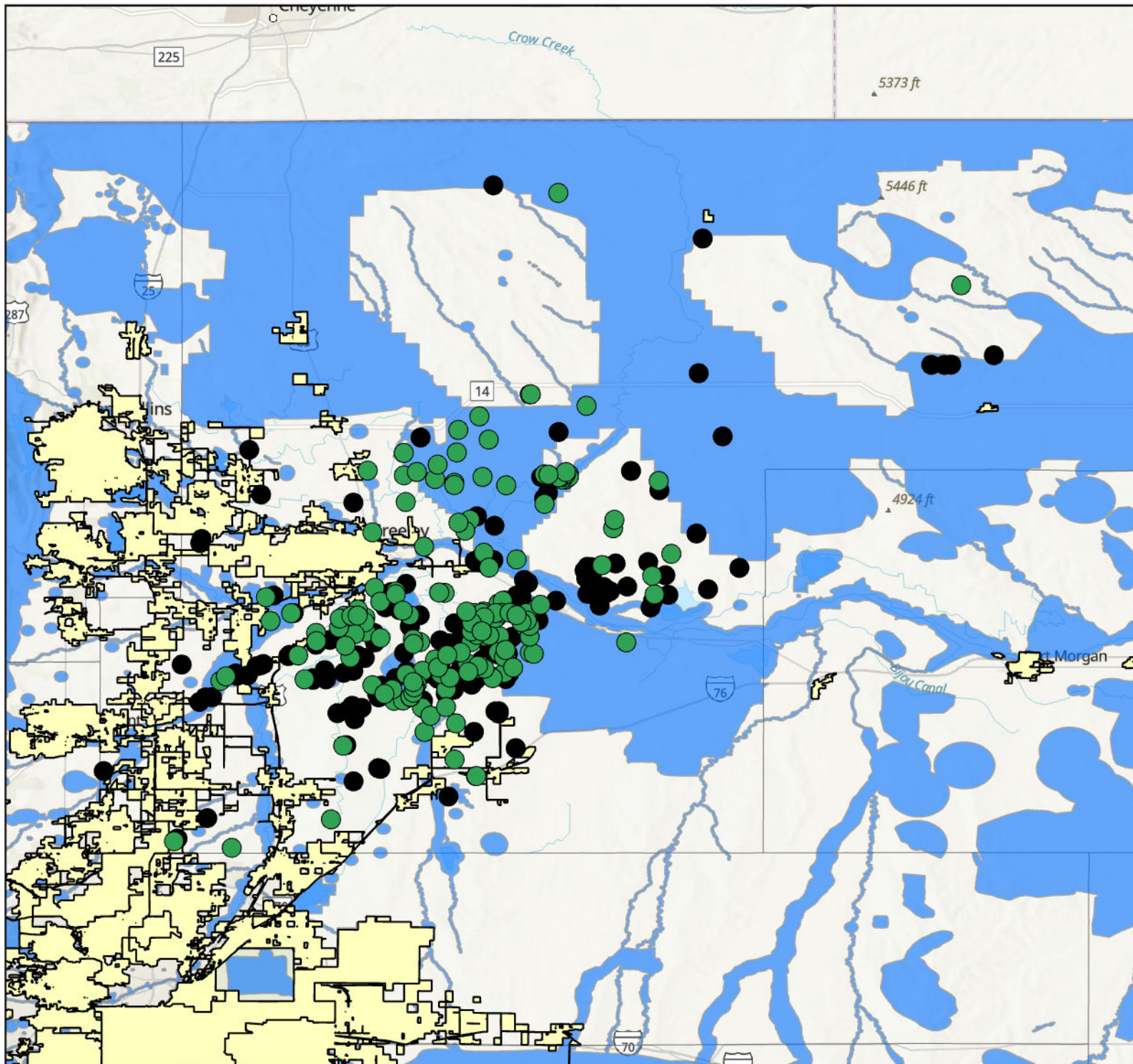
*Location = a private site where oil and gas operation occurs or occurred (no public access allowed)



0 2.735.45 10.9 Miles



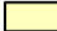


COLORADO
Energy & Carbon Management
Commission
Department of Natural Resources




Locations in Weld County Impacted by Data Falsification


As of 07/23/2025

178 Closed sites
171 Active sites

-  Municipalities
-  Colorado County Boundaries
-  CPW All High Priority Habitat (2025)

Weld County

 Closed (black) = post-production locations* that have completed remediation phase

 Active (green) = locations* currently under remediation

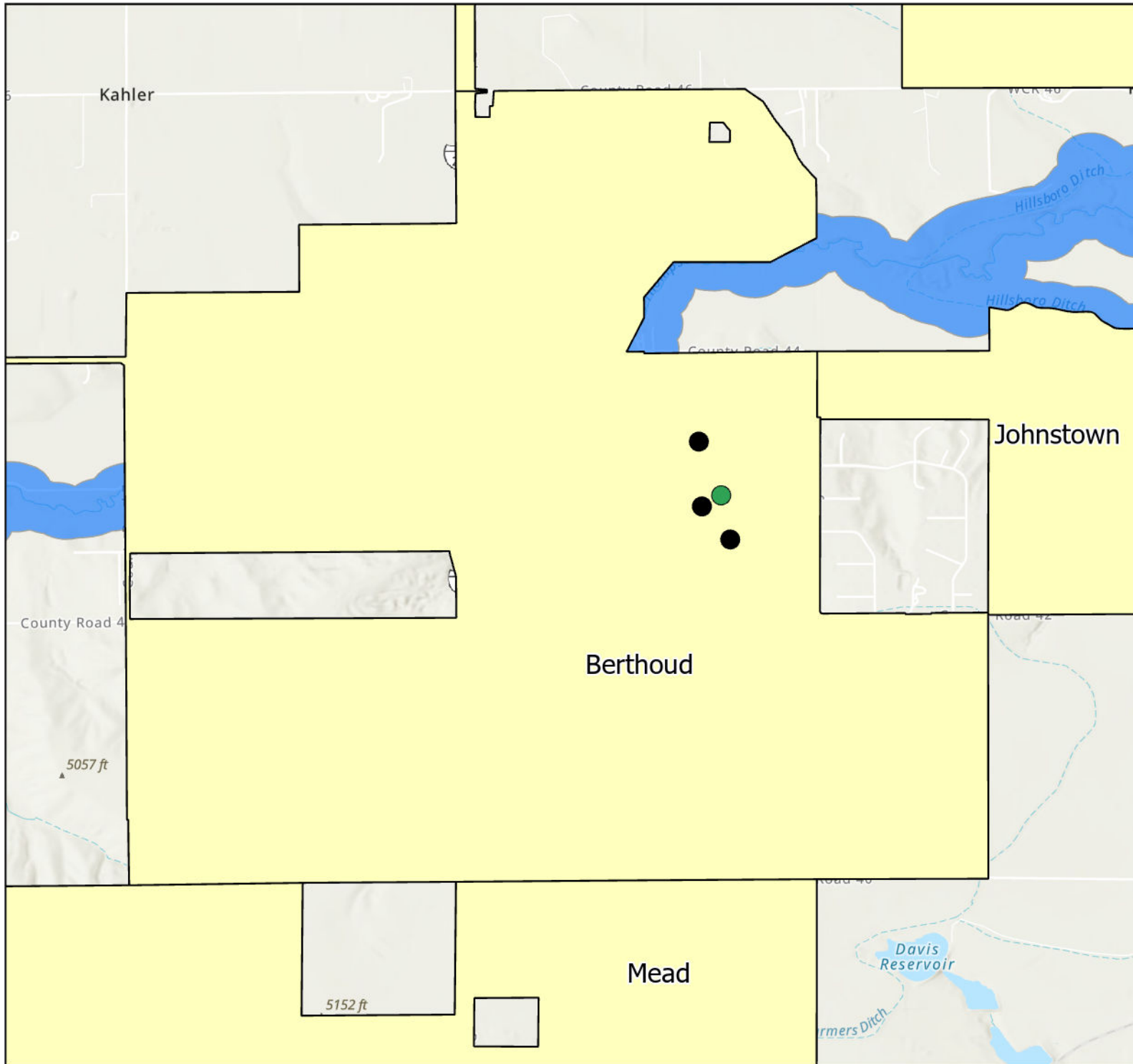
*Location = a private site where oil and gas operation occurs or occurred (no public access allowed)



0 2.735.45 10.9 Miles








COLORADO
Energy & Carbon Management
Commission
Department of Natural Resources



Locations in Berthoud Municipality Impacted by Data Falsification

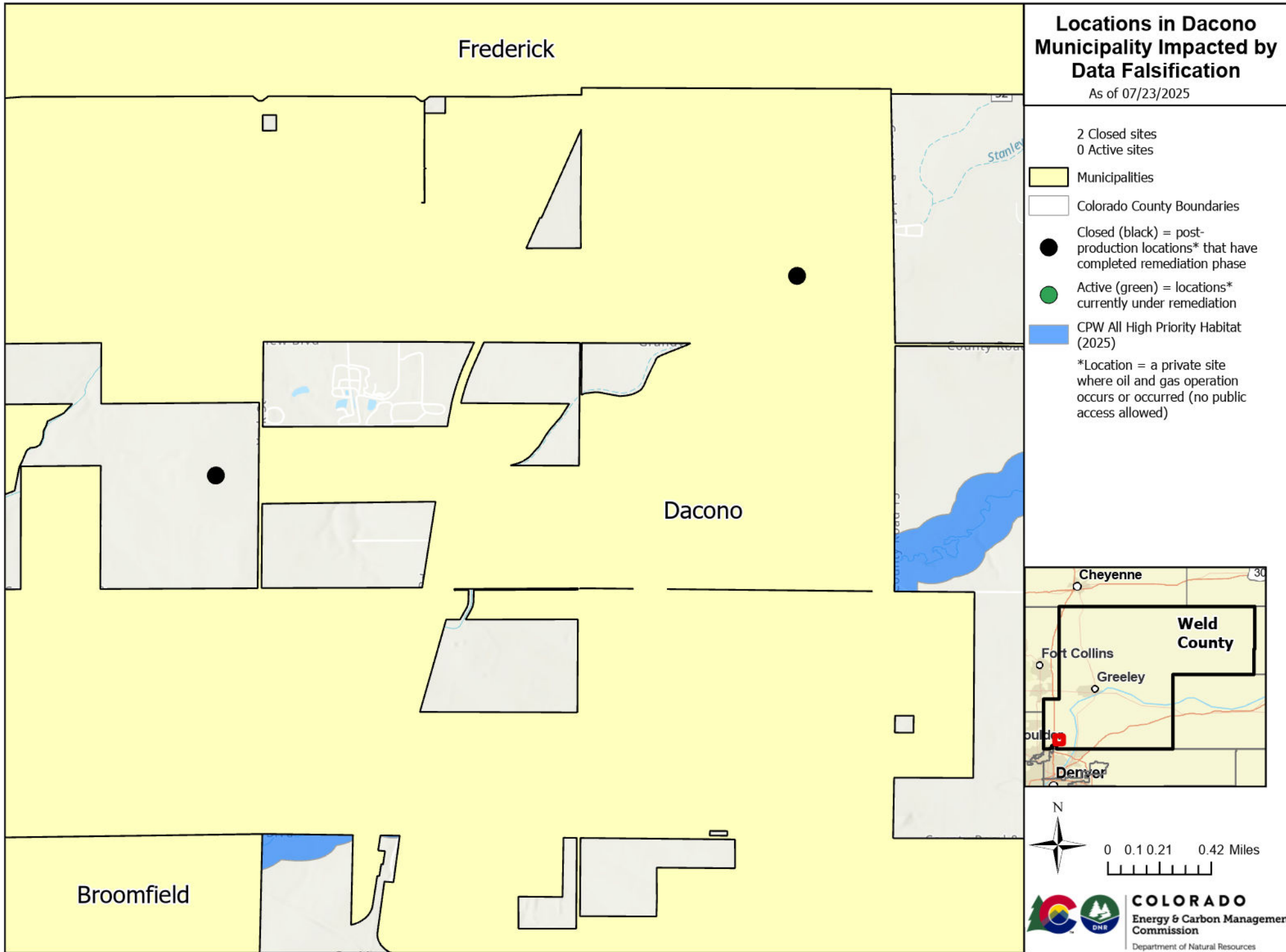
As of 07/23/2025

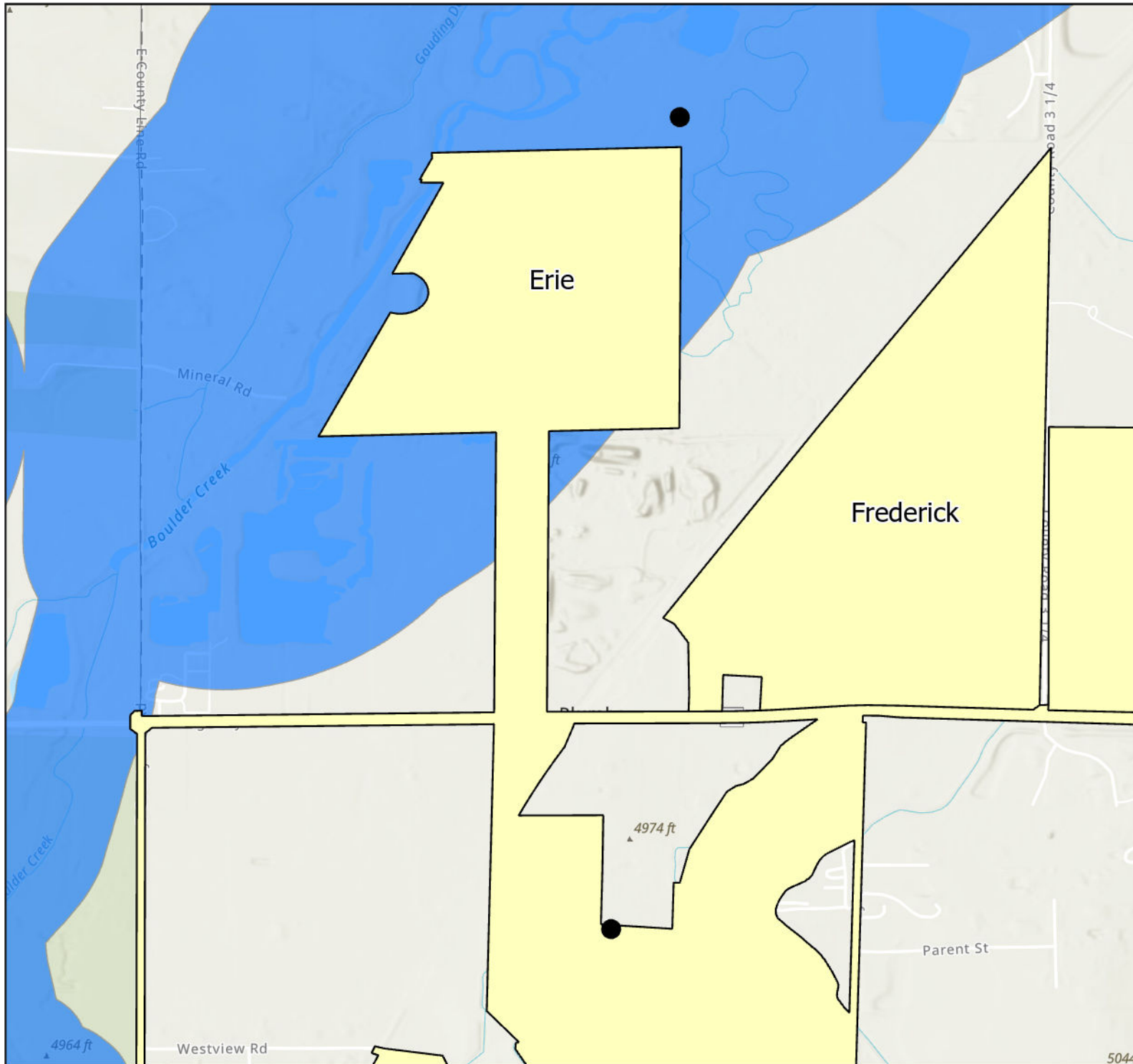
3 Closed sites
1 Active sites

-  Municipalities
-  Colorado County Boundaries
-  Closed (black) = post-production locations* that have completed remediation phase
-  Active (green) = locations* currently under remediation
-  CPW All High Priority Habitat (2025)

*Location = a private site where oil and gas operation occurs or occurred (no public access allowed)



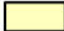






Locations in Erie Municipality Impacted by Data Falsification


As of 07/23/2025


2 Closed sites
0 Active sites

 Municipalities

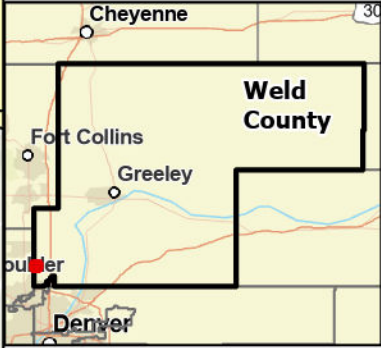
 Colorado County Boundaries

 Closed (black) = post-production locations* that have completed remediation phase

 Active (green) = locations* currently under remediation


 CPW All High Priority Habitat (2025)

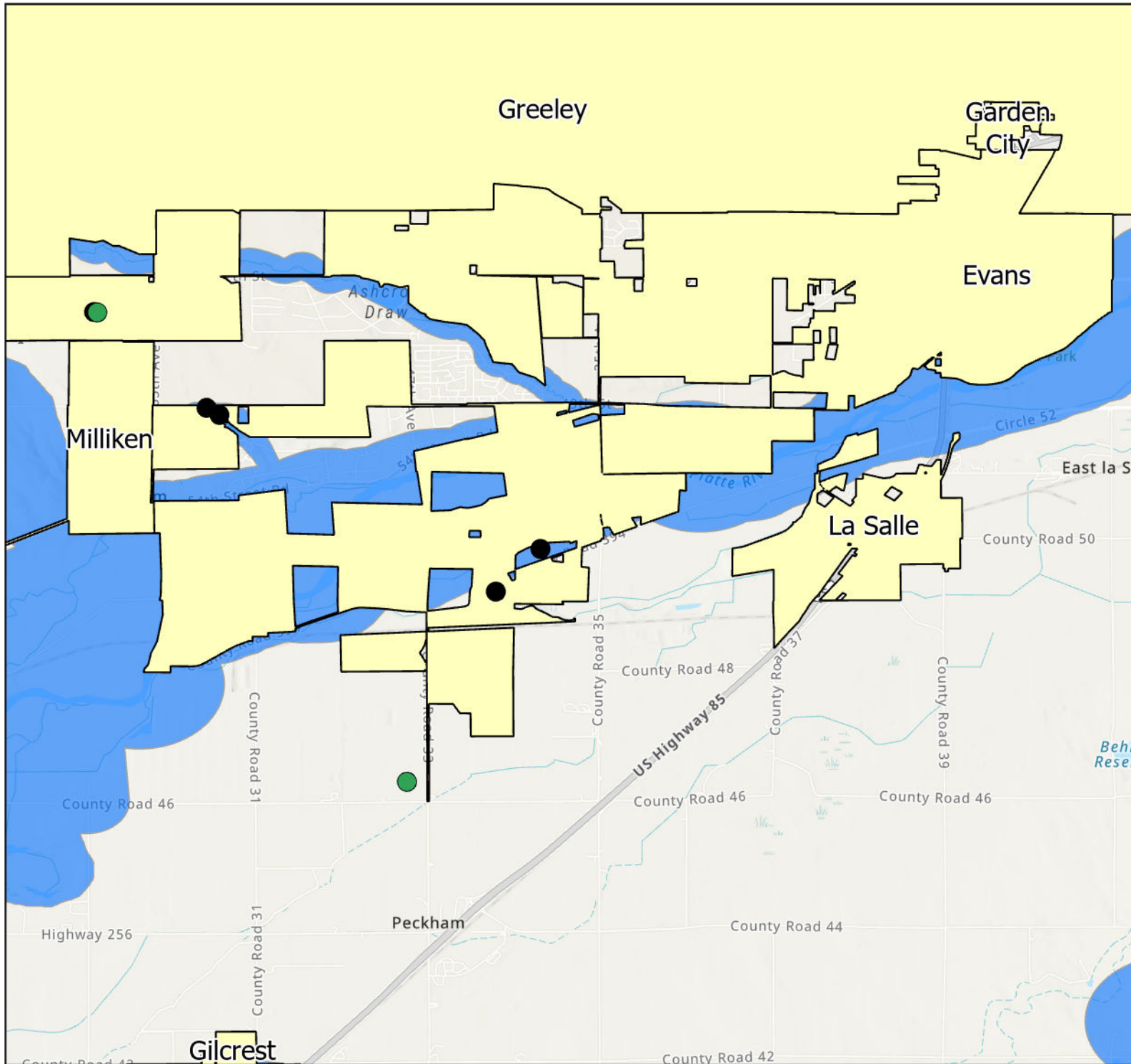
*Location = a private site where oil and gas operation occurs or occurred (no public access allowed)



N

0 0.05 0.1 0.2 Miles

 **COLORADO**
Energy & Carbon Management
Commission
Department of Natural Resources



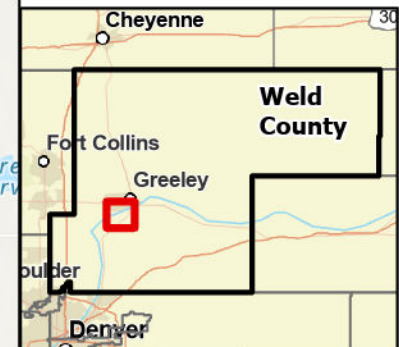
Locations in Evans Municipality Impacted by Data Falsification

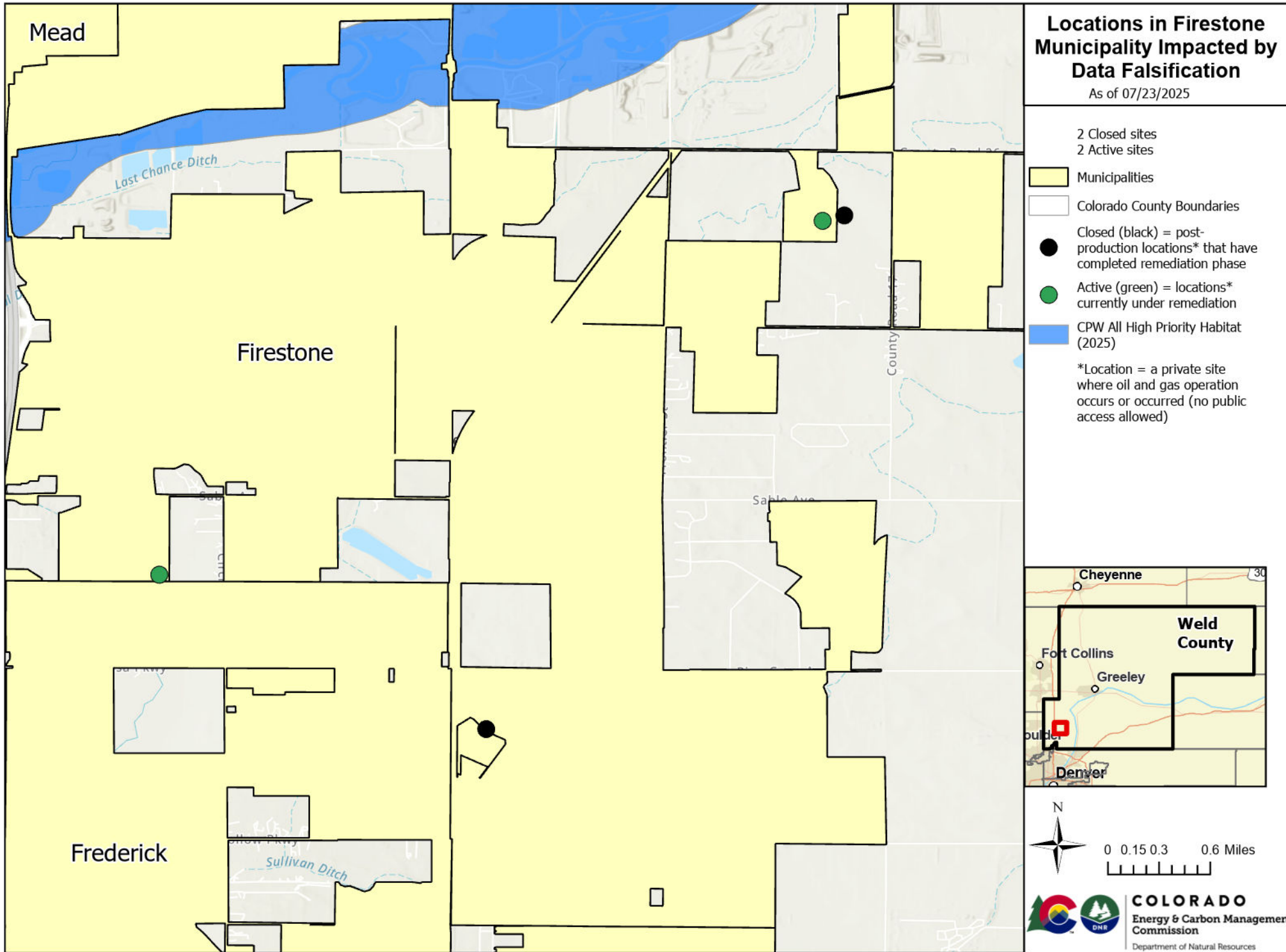
As of 07/23/2025

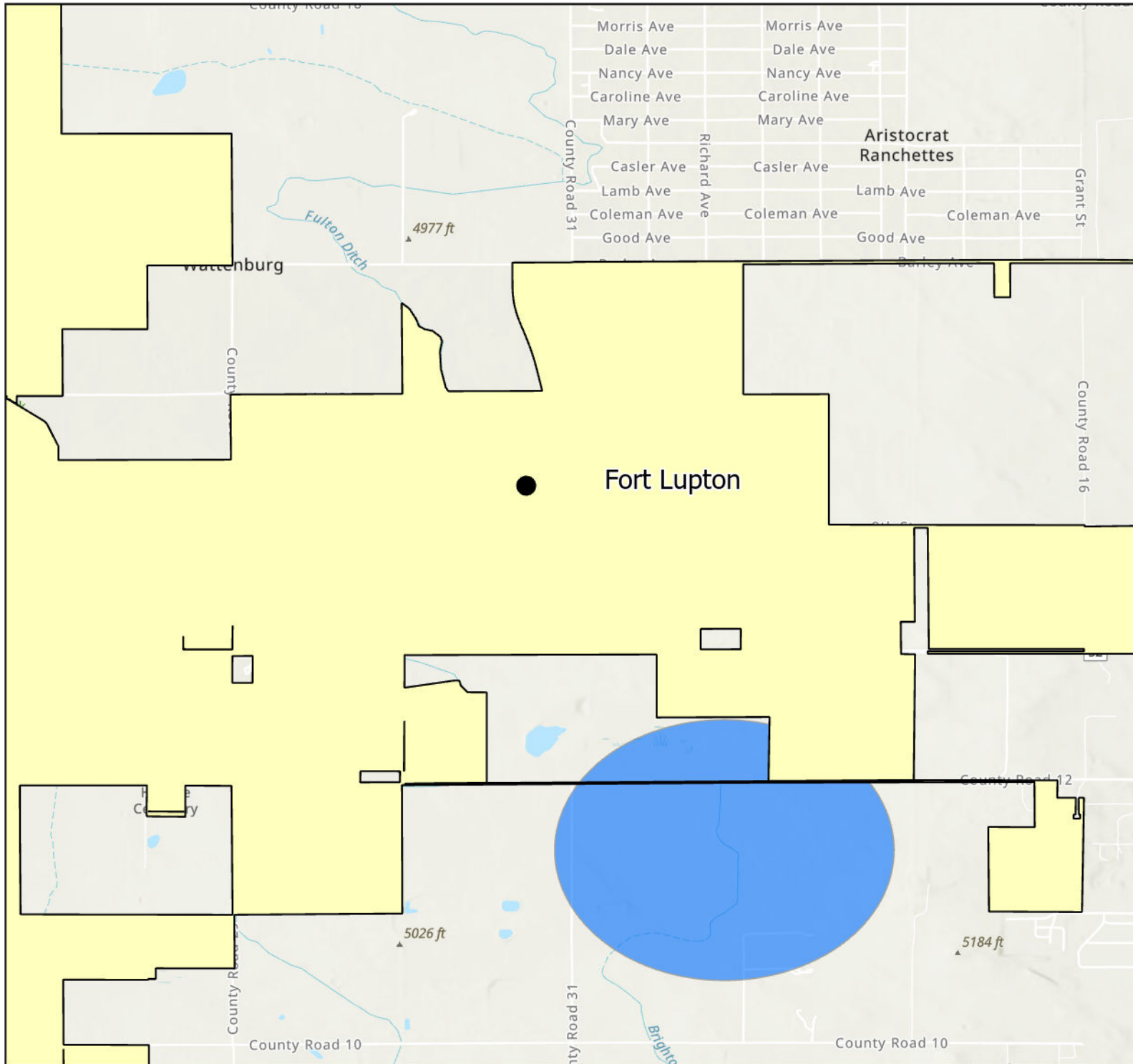
5 Closed sites
2 Active sites

- Municipalities
- Colorado County Boundaries
- Closed (black) = post-production locations* that have completed remediation phase
- Active (green) = locations* currently under remediation
- CPW All High Priority Habitat (2025)

*Location = a private site where oil and gas operation occurs or occurred (no public access allowed)





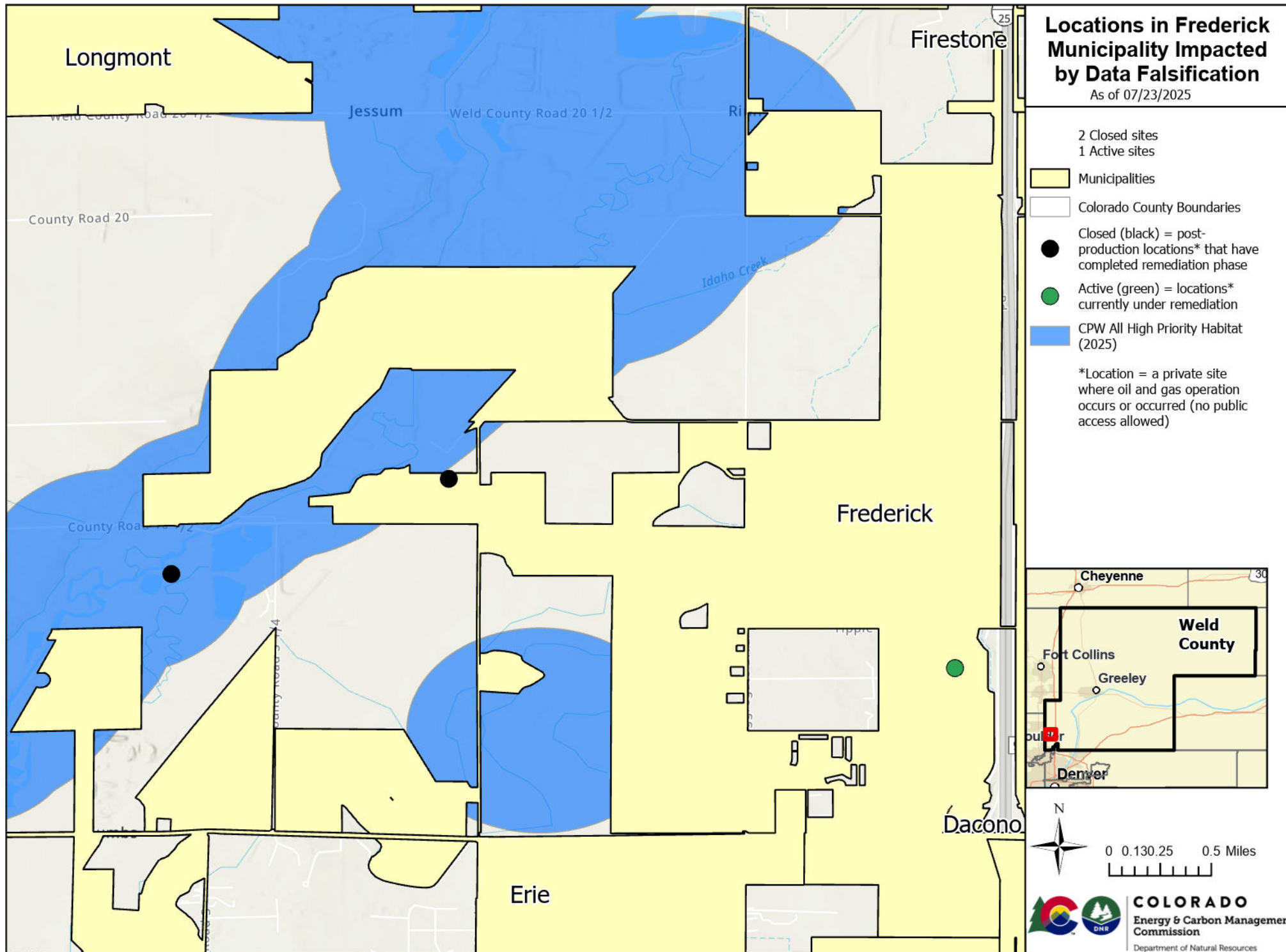


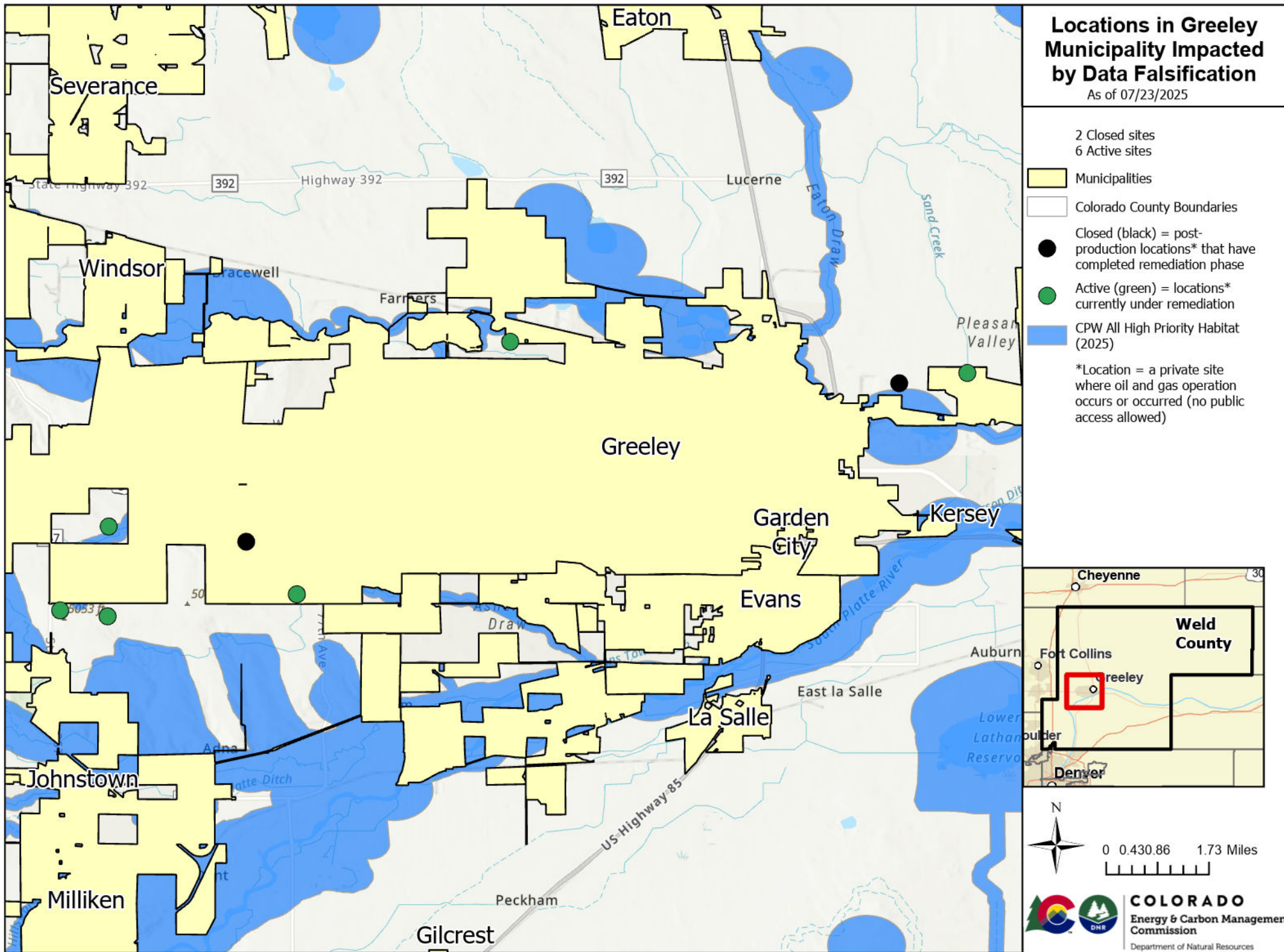
Locations in Fort Lupton Municipality Impacted by Data Falsification

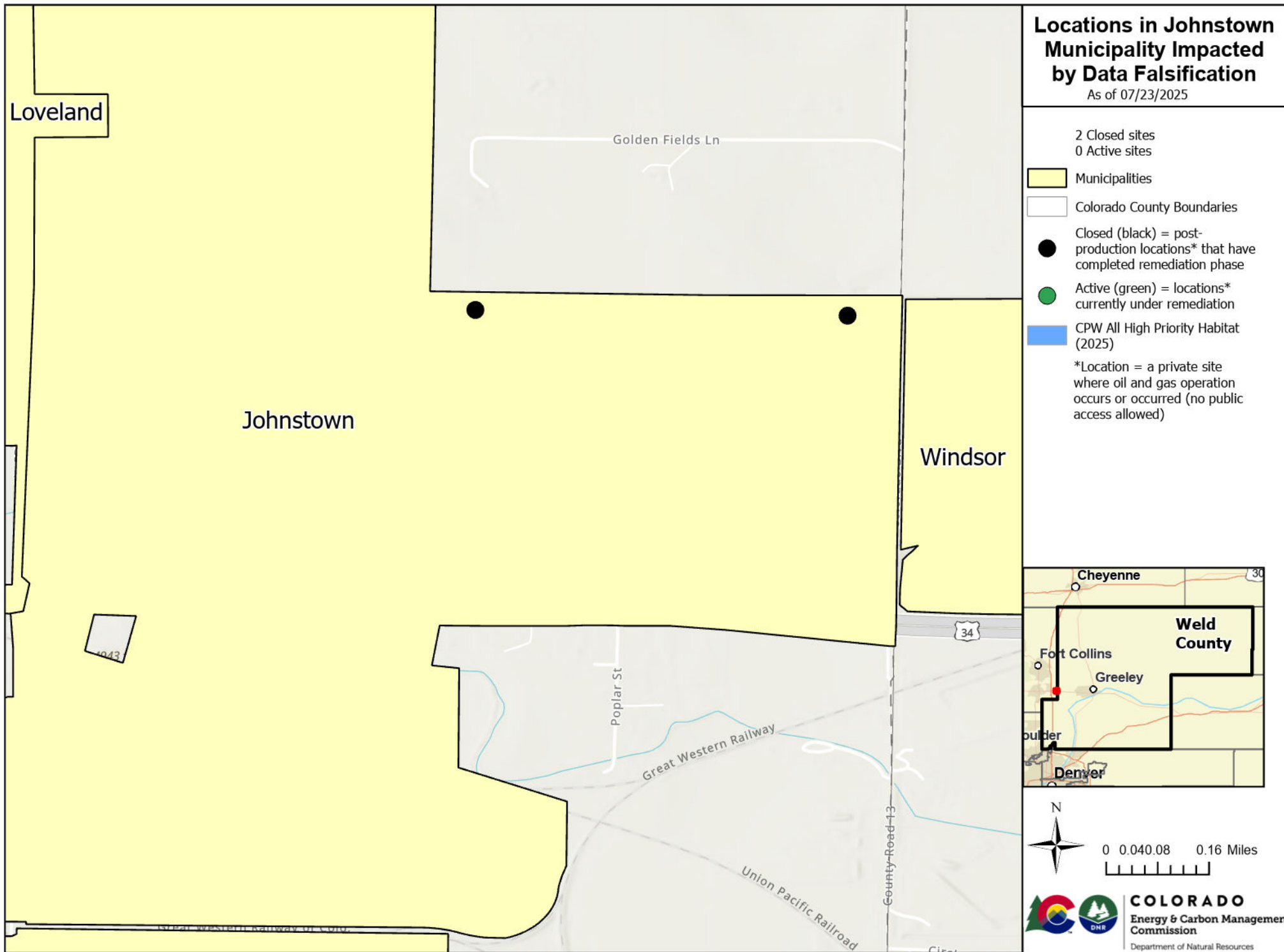
As of 07/23/2025

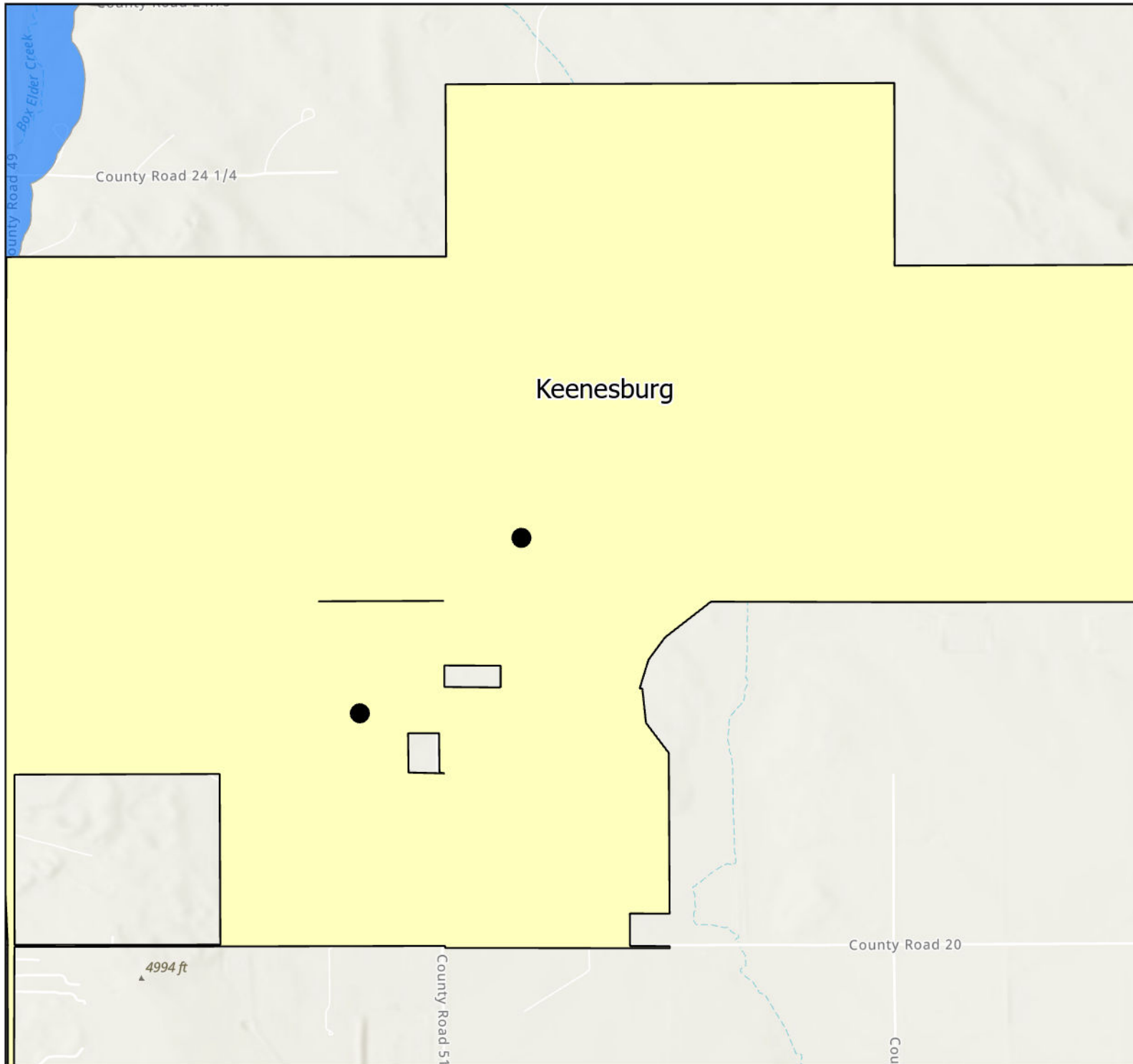
- 1 Closed sites
- 0 Active sites
- Municipalities
- Colorado County Boundaries
- CPW All High Priority Habitat (2025)
- Closed (black) = post-production locations* that have completed remediation phase
- Active (green) = locations* currently under remediation
- *Location = a private site where oil and gas operation occurs or occurred (no public access allowed)











Locations in Keenesburg Municipality Impacted

As of 07/23/2025

2 Closed sites
0 Active sites

● Closed (black) = post-production locations* that have completed remediation phase

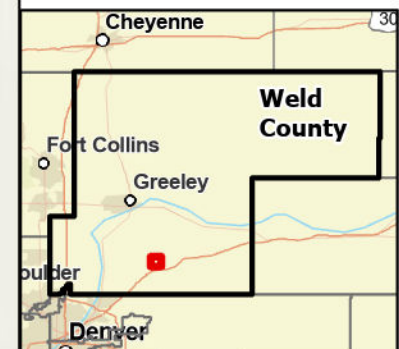
● Active (green) = locations* currently under remediation

■ Municipalities

□ Colorado County Boundaries

■ CPW All High Priority Habitat (2025)

*Location = a private site where oil and gas operation occurs or occurred (no public access allowed)



0 0.080.17 0.33 Miles



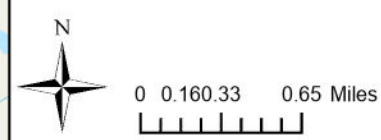
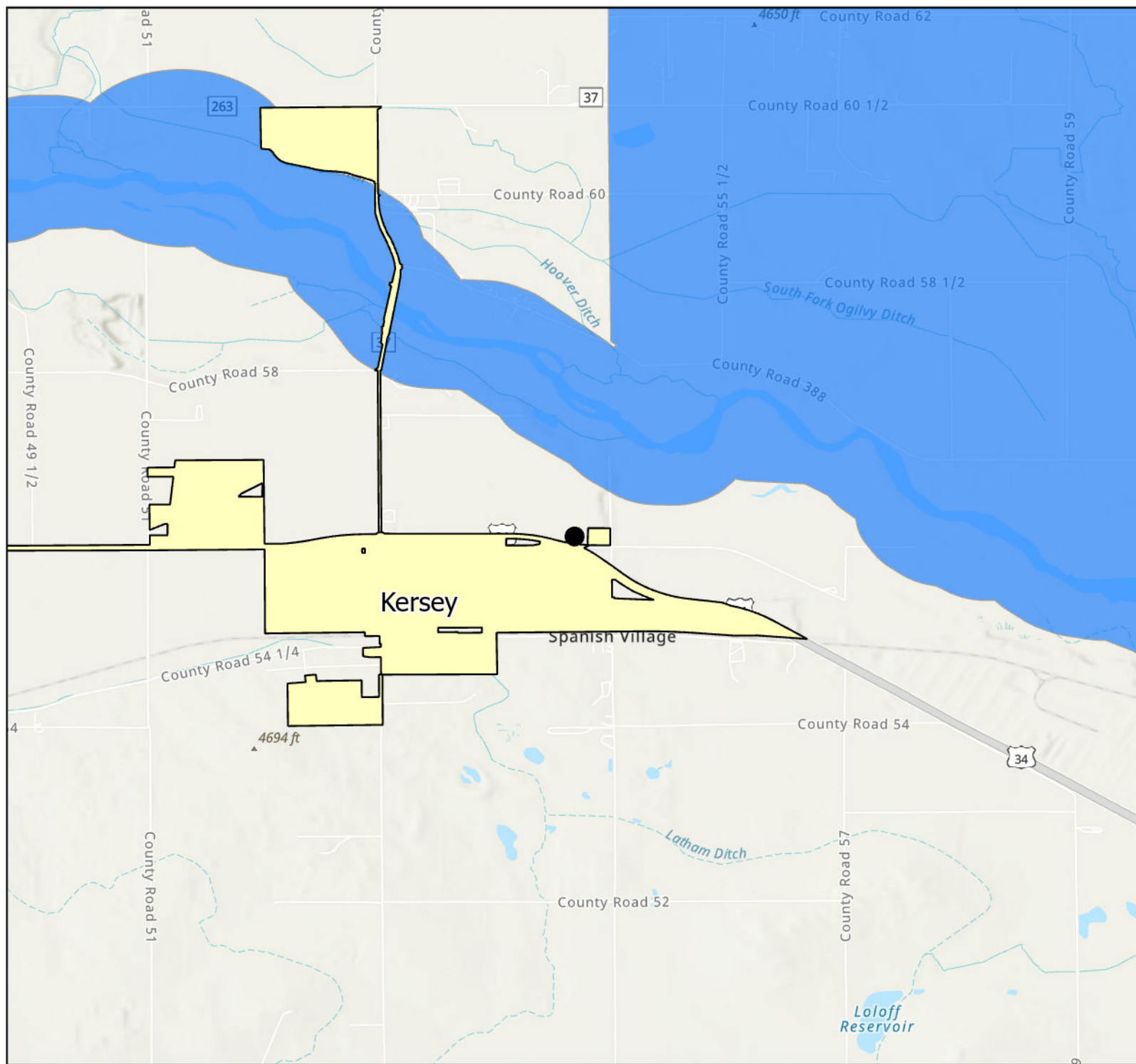
COLORADO
Energy & Carbon Management
Commission
Department of Natural Resources

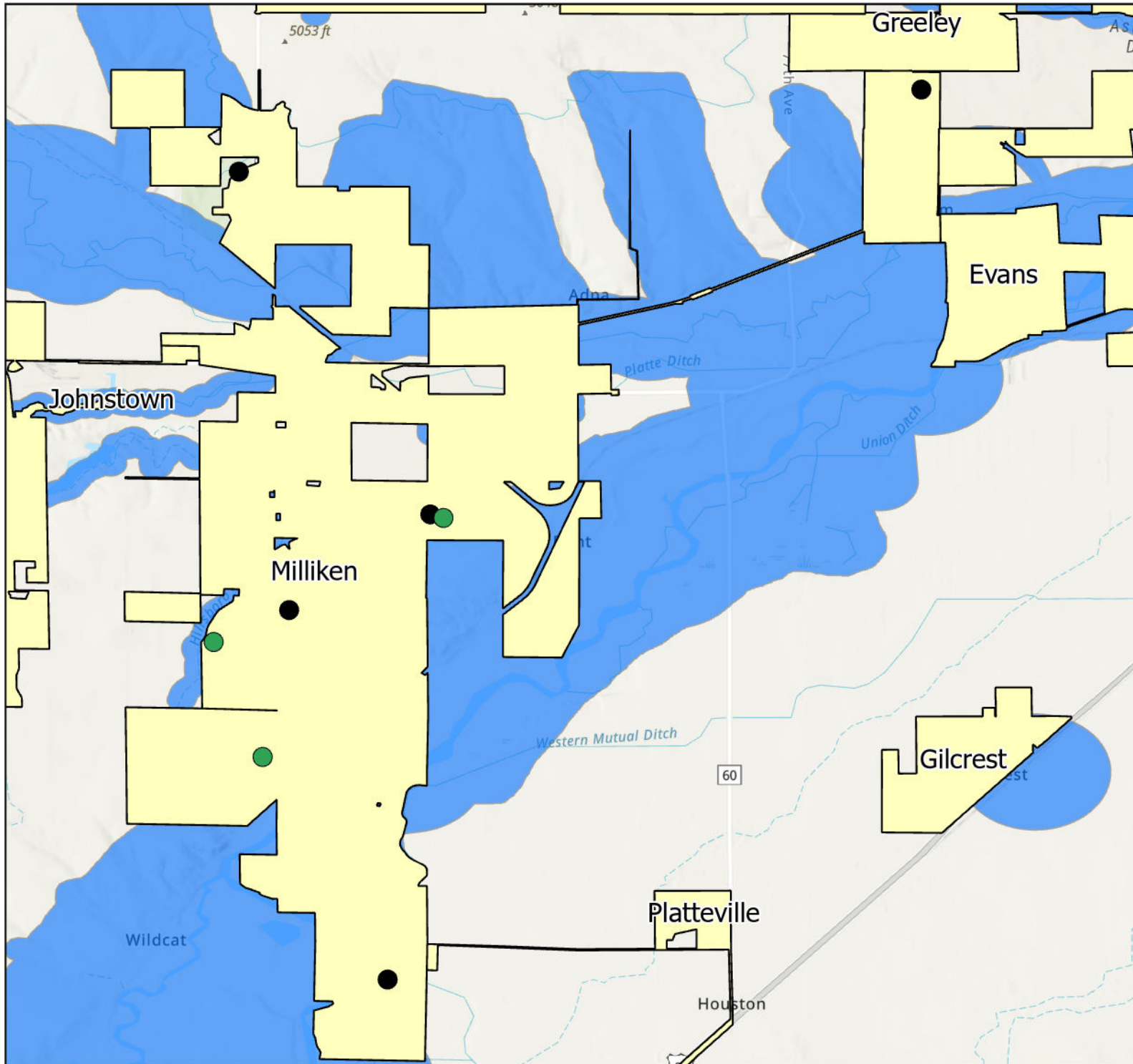
Locations in Kersey Municipality Impacted by Data Falsification

As of 07/23/2025

- 1 Closed sites
0 Active sites
- Municipalities
- Colorado County Boundaries
- Closed (black) = post-production locations* that have completed remediation phase
- Active (green) = locations* currently under remediation
- CPW All High Priority Habitat (2025)

*Location = a private site where oil and gas operation occurs or occurred (no public access allowed)





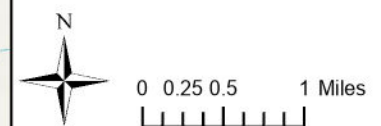
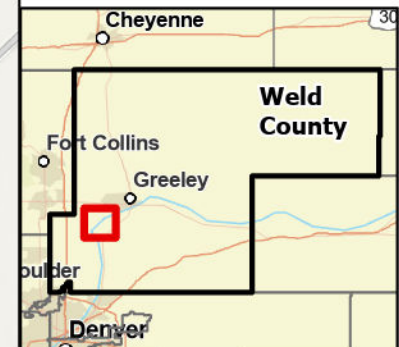
Locations in Milliken Municipality Impacted by Data Falsification

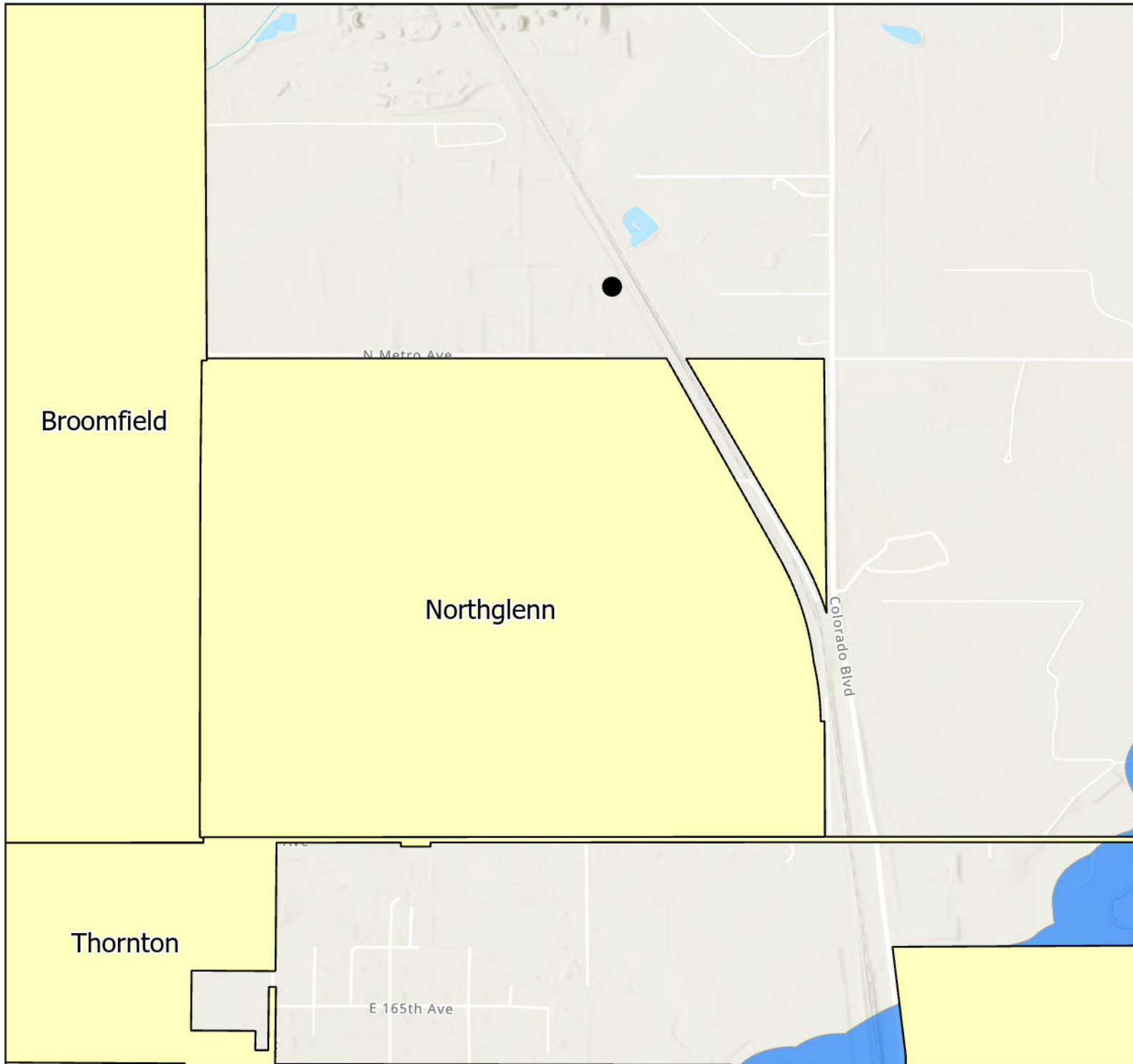
As of 07/23/2025

5 Closed sites
3 Active sites

- Municipalities
- Colorado County Boundaries
- Closed (black) = post-production locations* that have completed remediation phase
- Active (green) = locations* currently under remediation
- CPW All High Priority Habitat (2025)

*Location = a private site where oil and gas operation occurs or occurred (no public access allowed)










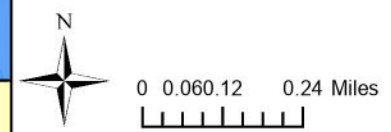
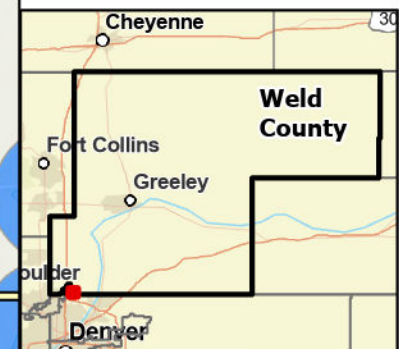
Locations in Northglenn Municipality Impacted by Data Falsification

As of 07/23/2025

1 Closed sites
0 Active sites

-  Municipalities
-  Colorado County Boundaries
-  Closed (black) = post-production locations* that have completed remediation phase
-  Active (green) = locations* currently under remediation
-  CPW All High Priority Habitat (2025)

*Location = a private site where oil and gas operation occurs or occurred (no public access allowed)




Locations in Platteville Municipality Impacted by Data Falsification


As of 07/23/2025


4 Closed sites
1 Active sites

 Municipalities

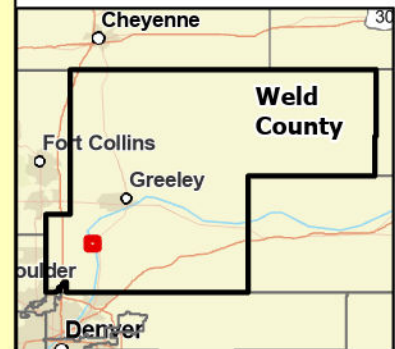
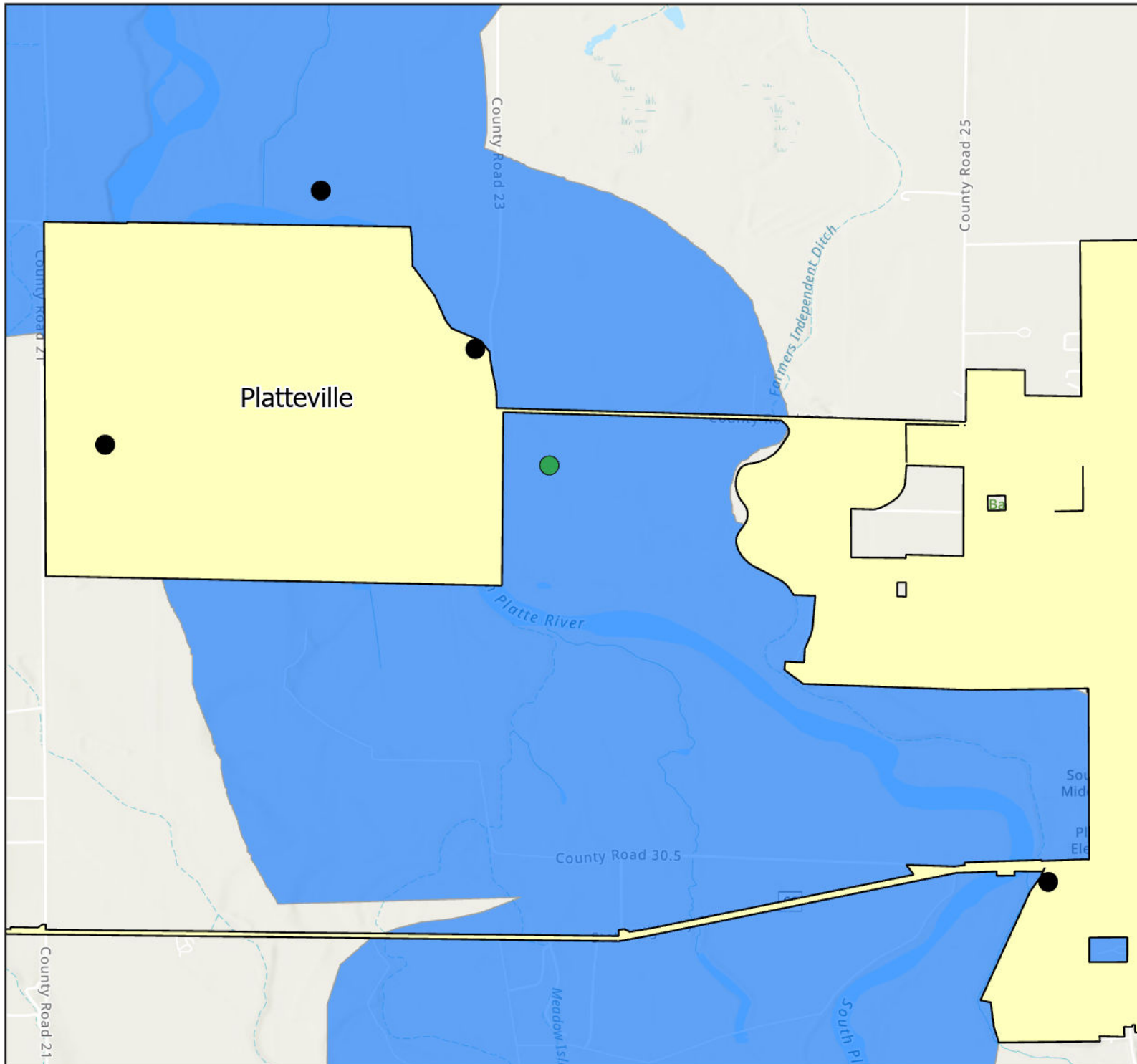
 Colorado County Boundaries

 Closed (black) = post-production locations* that have completed remediation phase

 Active (green) = locations* currently under remediation

 CPW All High Priority Habitat (2025)

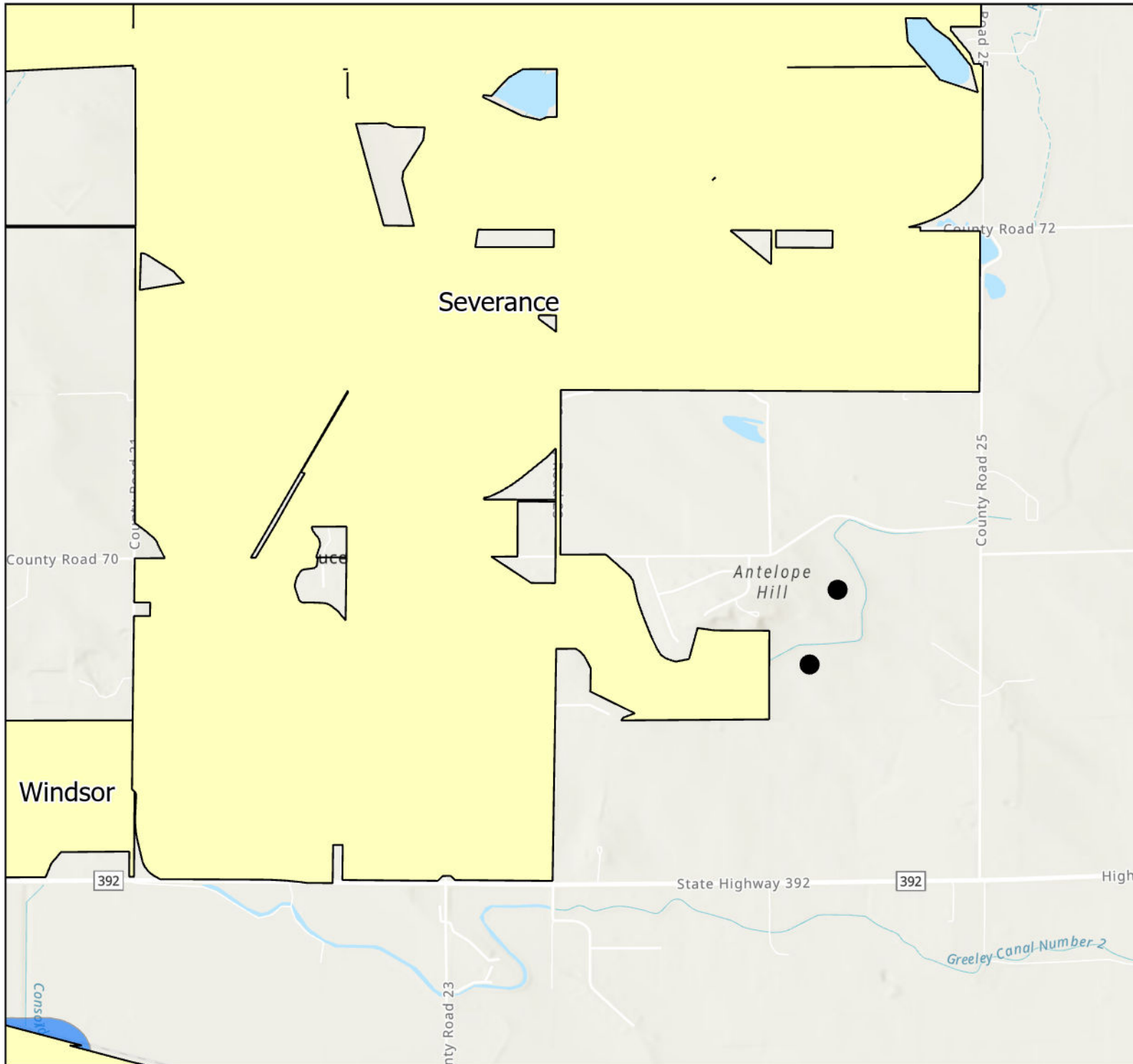
*Location = a private site where oil and gas operation occurs or occurred (no public access allowed)



0 0.080.16 0.32 Miles

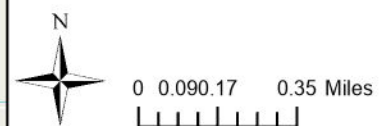
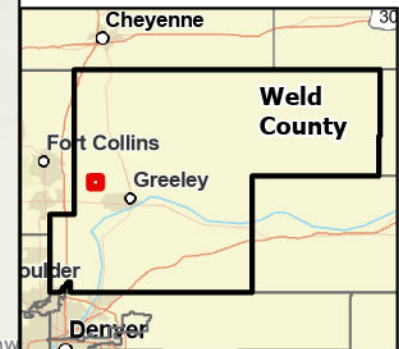


COLORADO
Energy & Carbon Management
Commission
Department of Natural Resources



Locations in Severance Municipality Impacted by Data Falsification As of 07/23/2025

- 2 Closed sites
- 0 Active sites
- Municipalities
- Colorado County Boundaries
- Closed (black) = post-production locations* that have completed remediation phase
- Active (green) = locations* currently under remediation
- CPW All High Priority Habitat (2025)
- *Location = a private site where oil and gas operation occurs or occurred (no public access allowed)




Locations in Windsor Municipality Impacted by Data Falsification


As of 07/23/2025


3 Closed sites
0 Active sites

 Municipalities

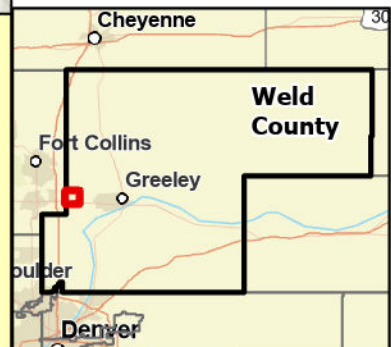
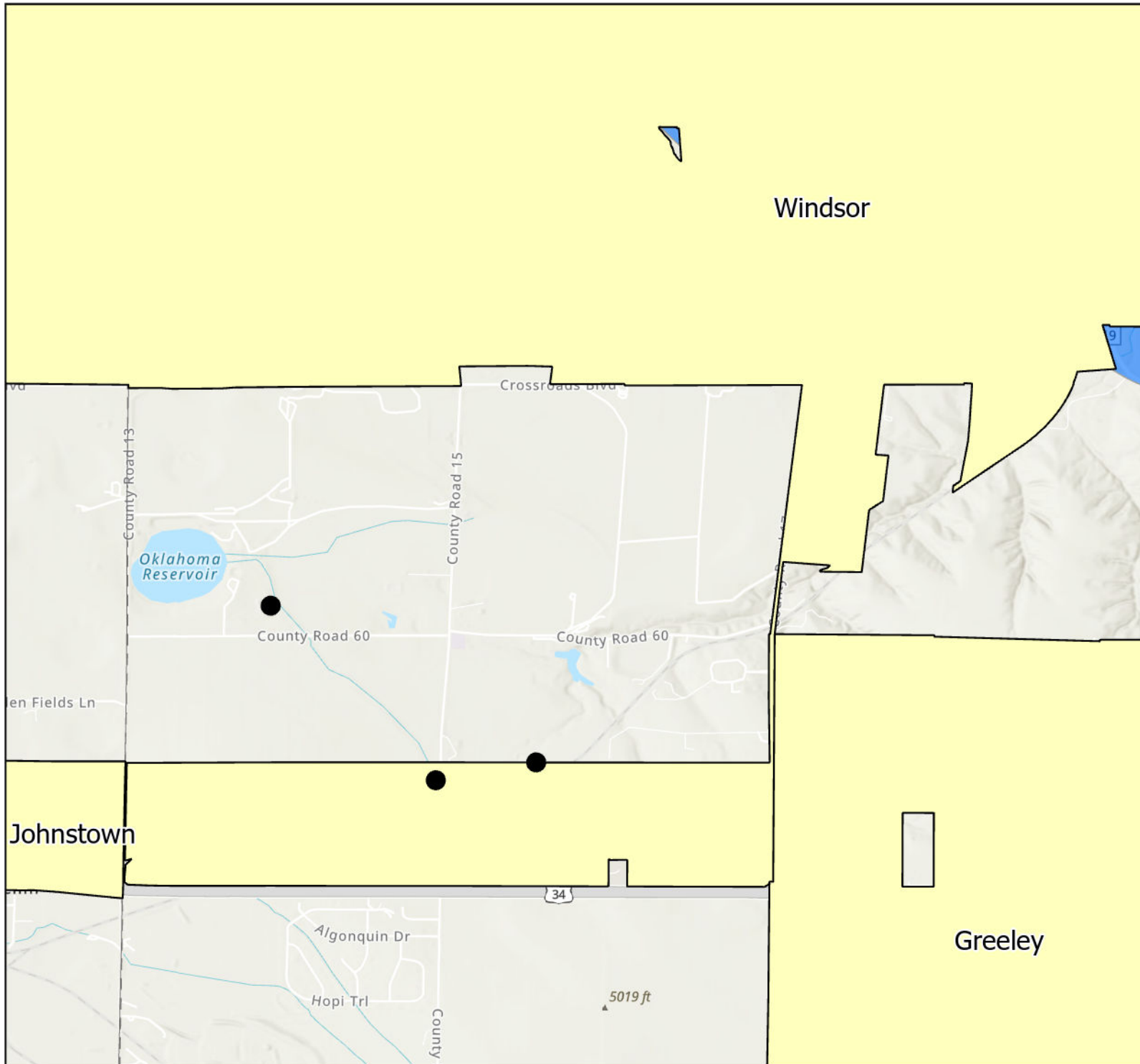
 Colorado County Boundaries

 Closed (black) = post-production locations* that have completed remediation phase

 Active (green) = locations* currently under remediation

 CPW All High Priority Habitat (2025)

*Location = a private site where oil and gas operation occurs or occurred (no public access allowed)



0 0.120.23 0.46 Miles



COLORADO
Energy & Carbon Management
Commission
Department of Natural Resources